

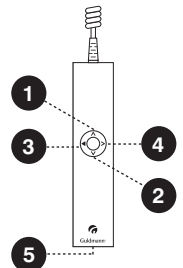


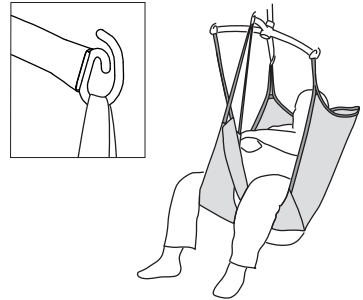
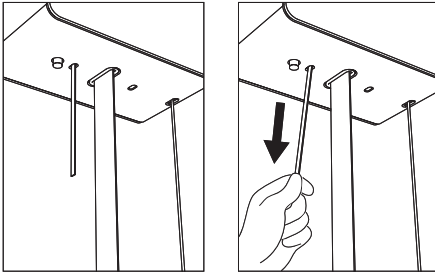
Quick Guide – GH3 Twin

- The ceiling hoist is switched on by pressing one of the buttons on the hand control.
 - A green indicator lamp will show that the hoist is switched on and ready for use.
 - If the indicator lamp shows yellow, this means that there is no main connection to the hoist.
 - If the indicator lamp is yellow and the hoist is beeping when activated, there is a fault with the hoist.
 - If the ceiling hoist does not switch on, this may be because the emergency stop has been activated – red strap (labelled with triangle symbol).
 - The hoist does not need to be turned off – it switches off automatically after approximately two minutes without activation.
 - The hoist recharges when it is in the rail system.
- The hoist's lifting capacity is marked on the hoist, e.g., 500 kg. Note that the rail system or the sling may have a lower lifting capacity. The lowest lifting capacity must not be exceeded.
 - If you have any questions regarding instructions and training, ask your environmental health & safety coordinator, human resources manager or your line manager.

Hand control

1. Lift
2. Lower
3. Lift leader hoist.
(Tilt fuction with horizontal lifter)
4. Lower leader hoist.
(Tilt fuction with horizontal lifter)
5. PDA interface
(micro USB)





Safety functions

Emergency stop

- One pull on the red strap. Use only in emergencies, when there is an immediate need to stop the hoist.
- When the emergency stop is activated, only the hoist's emergency lowering device will function.
- Deactivate the emergency stop by pressing the "stop" button (yellow button) on the hoist. Then press one of the buttons on the hand control unit twice.

Emergency lowering device

This is activated by a prolonged pull on the red strap. Use only in an emergency. This function allows the patient to be lowered when the hoist has failed to work.



Scan here for user manual, etc. concerning use of the GH3 Twin.

Accessories

Lifting hanger

Place the sling straps in the hooks. Check that the straps have been correctly attached to the hanger.

Lifting sling

We recommend using a lifting sling with two or four loop attachments for attaching the sling to the lifting hanger. The sling must always correspond with the hoist's lifting capacity. Always use individually marked CE products. In case of doubt concerning the use of a lifting sling, please see sling user manual or contact your supplier.

Daily cleaning and maintenance

Clean with a damp cloth and ordinary detergent. Do not use strong acids, bases or alcohol when cleaning. See user manual.

| Time to care |

V. Guldmann A/S

Graham Bells Vej 21-23A, DK-8200 Aarhus N
Tel. +45 8741 3100, Fax +45 8741 3131
info@guldmann.com
www.guldmann.com